



Discover your new home in Carlisle. Utano Care is proud to offer SDA accommodation in the heart of Carlisle, tailored specifically for SDA participants. Nestled on Oats Street, our villas offer easy access to a variety of local amenities. These spacious villas are perfect for those seeking comfort, convenience and offer an inviting contemporary style.

Why Choose Carlisle?

Carlisle offers the perfect blend of suburban tranquillity and urban convenience. With easy access to the city, the airport, and major roads, you'll find that everything you need is within reach. Whether you prefer a quiet evening at home or exploring local attractions like the Swan River or Optus Stadium, Carlisle is centrally located for both relaxation and adventure. Several parks are also close by for that breath of fresh air and are ideal for a stroll or outdoor activities.

Our villas in Carlisle are meticulously crafted to offer a comfortable and practical living space. Each villa boasts an open floor plan, allowing for easy movement and flexibility, ideal for those requiring additional accessibility. The bright, light-filled interiors create a warm and inviting atmosphere, perfect for both relaxation and social interaction.



Aminities

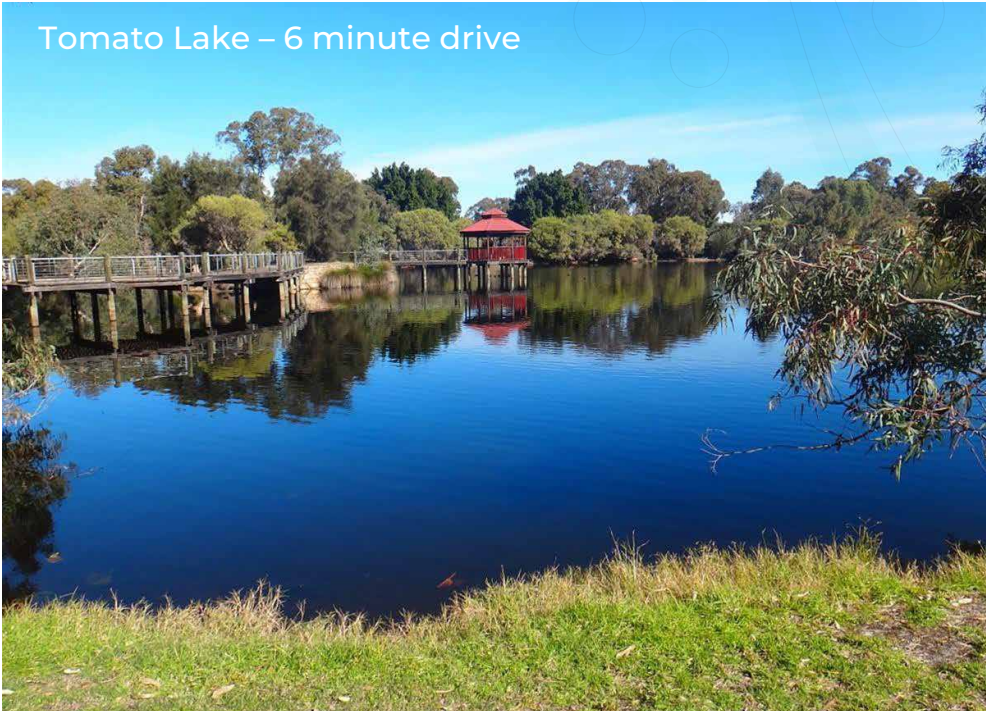


Bentley Health Service (Hospital) 8 minute drive

The area offers great amenities located nearby.

With shops, restaurants, and park options close by, there's always something to do.

Whether you're looking for convenience, entertainment, or a peaceful escape in nature, this location offers the best of all worlds.



Tomato Lake – 6 minute drive



Daily Pour Kitchen at your doorstep



Home of West Coast Eagles Club
3 minute drive

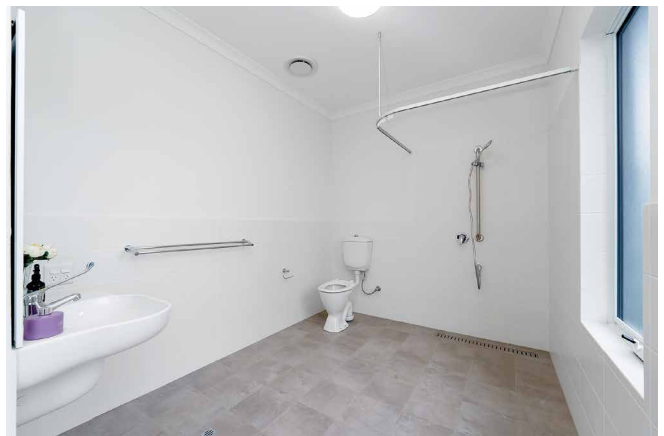
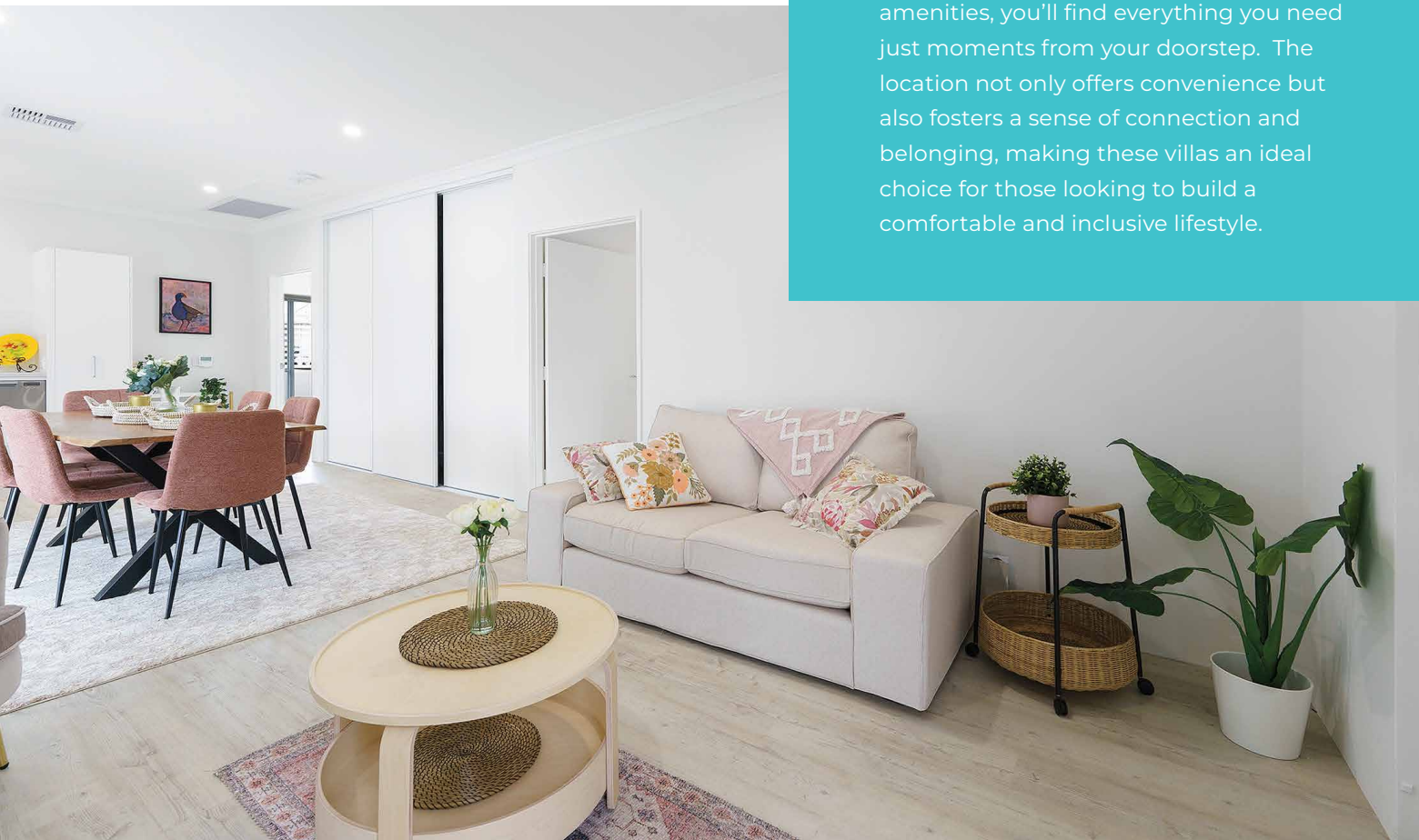
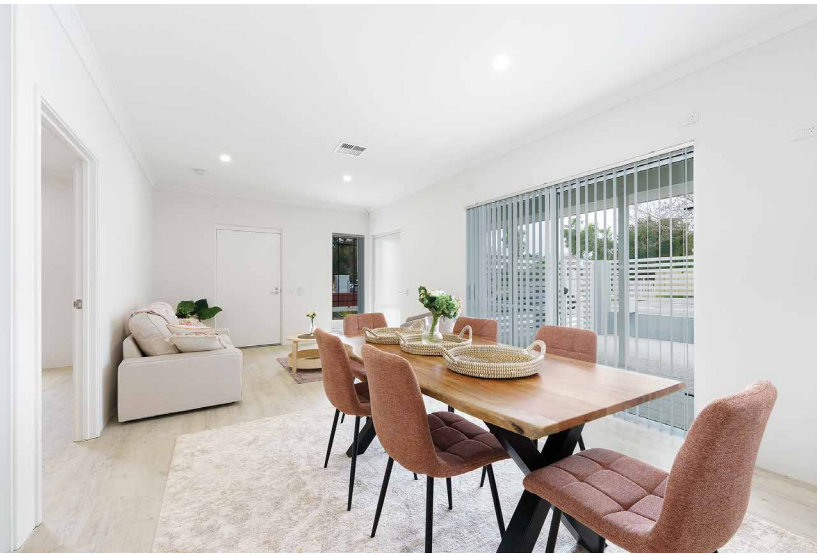


Aqualife Centre - 2 minute drive

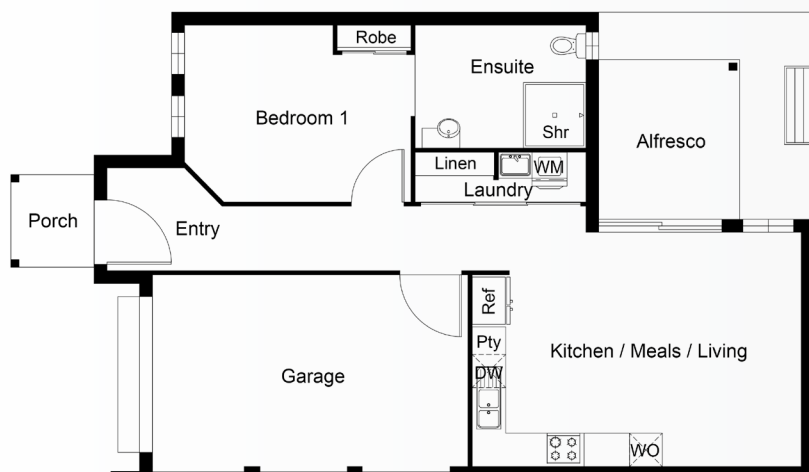
The Villas

Each villa comes with its own private courtyard to enjoy your own outdoor space for relaxation or entertaining. High quality fixtures and fittings throughout the villas ensure durability and ease of maintenance, providing a living environment that is both functional and aesthetically pleasing.

Living in our Carlisle villas means being part of a welcoming and supportive community. With nearby access to essential services and a variety of local amenities, you'll find everything you need just moments from your doorstep. The location not only offers convenience but also fosters a sense of connection and belonging, making these villas an ideal choice for those looking to build a comfortable and inclusive lifestyle.

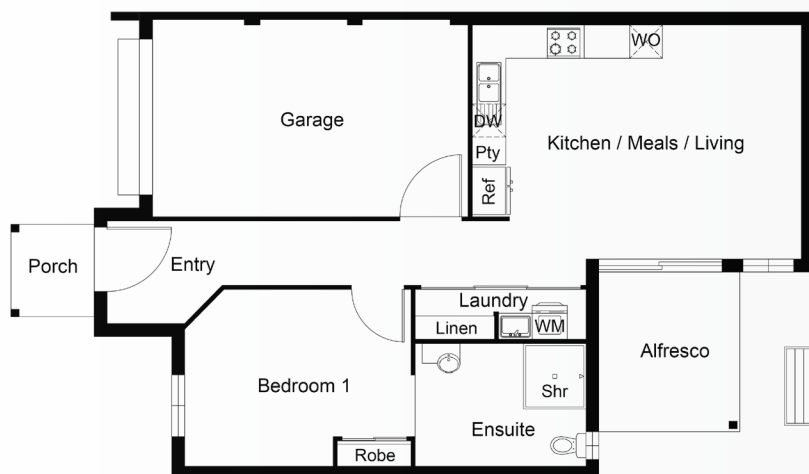


Floor Plans



Lot 3 🛏️ 1 🚿 1 🚗 1 🏠 111.33m²

	Area	Perimeter
House	75.95	46.04
Garage	24.56	20.40
Alfresco	8.10	11.40
Porch	2.72	6.60
Total	111.33m²	84.44m



Lot 4 🛏️ 1 🚿 1 🚗 1 🏠 111.33m²







	Area	Perimeter
House	75.95	46.04
Garage	24.56	20.40
Alfresco	8.10	11.40
Porch	2.72	6.60
Total	111.33m²	84.44m









Lot 5 🛏️ 2 🚿 2 🚗 1 🏠 131.09m²


	Area	Perimeter
House	94.43	40.20
Garage	24.46	21.18
Alfresco	8.00	12.00
Porch	4.20	8.20
Total	131.09m²	81.58m



-  2 x one bedroom villa
-  1 x 1 bedroom, plus OOA
-  Single car garage
-  Built in Robes
-  Private Courtyard
-  High physical support design

-  Exclusive use of shared vehicle
-  Assistive Technology
-  Broadband
-  Energy efficient
-  Concierge service

Melanie Grohovaz  0421 661 296

Corinne Snowman  0407 996 726

Utanocare.com.au