

567 Canning Highway, Alfred Cove



Wholistic Living with
easy access to everything.



Creating Accessible Lifestyle Villages for Independent Living

Utano Care is proud to welcome you to 567 Canning Highway, Alfred Cove, where twenty newly built Specialist Disability Accommodation (SDA) apartments are now available, together with two dedicated OOA units. These High Physical Support dwellings have been thoughtfully designed to provide a comfortable, independent living experience tailored to your needs.



Utano Care provides Specialist Disability Accommodation (SDA) concierge services exclusively within Ilios Living Villages. The concierge service is designed to enhance your quality of life in your forever SDA-approved home. These services go beyond basic accommodation needs, offering a range of support to ensure that you can fully enjoy your living environment, engage with your community, and achieve your personal goals.

Utano Care service is offered exclusively within the Ilios Living village and includes:



Community Access: Coordinating the bookings and use of our exclusive shared vehicles, booking of the community lounges for special events, booking and access to Utano Living event venues and organising excursions and onsite events.



Onsite Overnight Accommodation (OOA): Coordination of the Ilios Village OOA accommodation and support, giving you peace of mind that care is always nearby if needed.



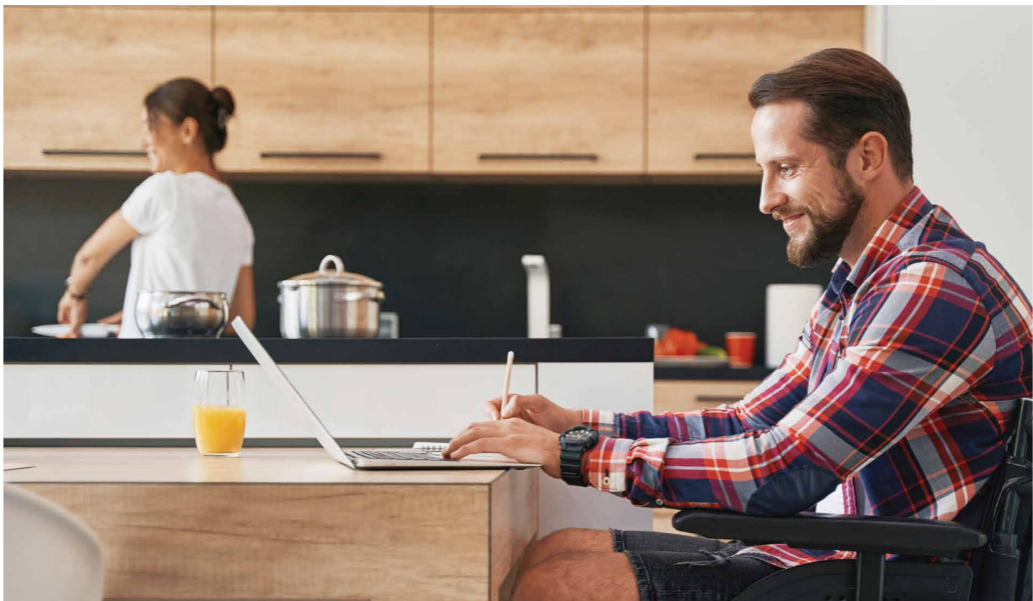
Visitor's Apartment: Coordination and booking of our onsite visitor's apartments available for families staying overnight while visiting you at the village.



Management of your property: Ensuring your property and surrounding gardens are maintained to a high standard and making it an environment you will be proud to call home.



Emergency Assistance: Your concierge provides a second point of contact for urgent needs or emergencies. This ensures that Ilios Living residents have immediate support and guidance when unexpected



Utano Care's concierge service ensures that our residents can enjoy greater independence, comfort, and a higher quality of life, contributing to a supportive and enriching living environment.

Prime Location in Alfred Cove, Perth



Nestled in a vibrant community, with local shops, cafes, and restaurants just minutes away.



Proximity to Fiona Stanley Hospital and St. John of God Murdoch Hospital, ensuring access to top healthcare facilities.



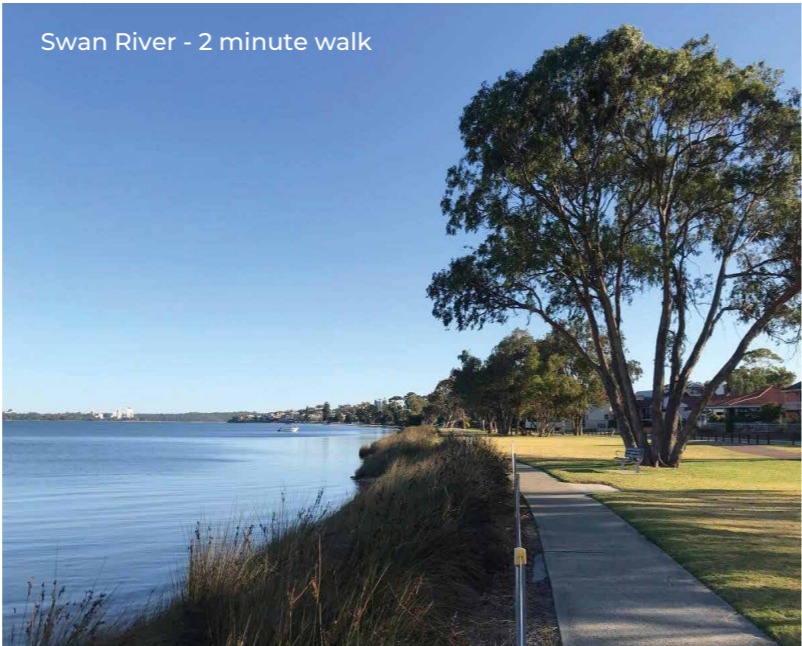
Enjoy nearby parks like Tompkins Park and the Swan River, perfect for leisurely strolls and social activities.



Living in our Alfred Cove apartments means being part of a welcoming and supportive community. With nearby access to essential services and a variety of local amenities, you'll find everything you need just moments from your doorstep. The location not only offers convenience but also fosters a sense of connection and belonging, making these apartments an ideal choice for those looking to build a comfortable and inclusive lifestyle.



Exhilarating views of the CBD



Swan River - 2 minute walk



Our Apartments

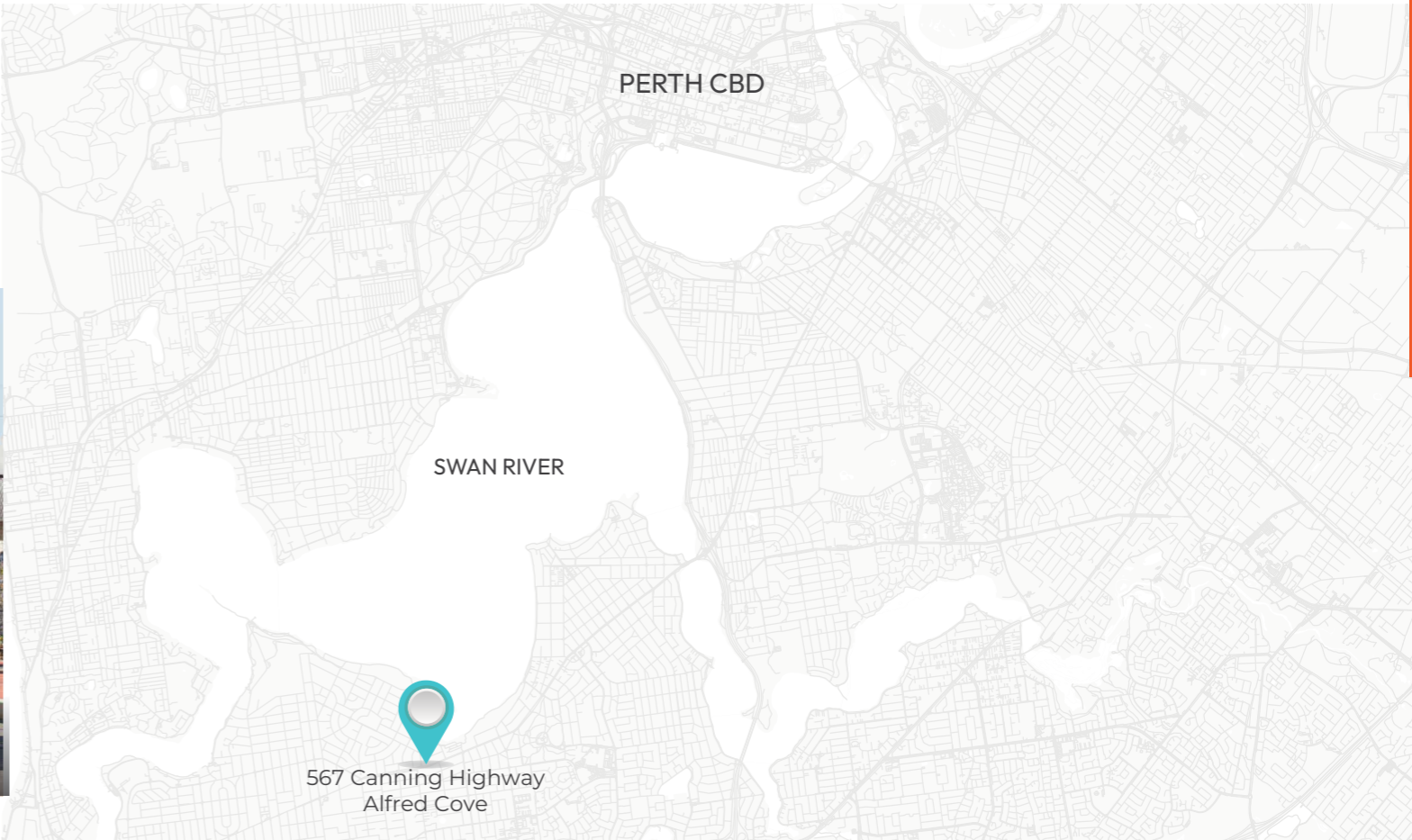
Ground Floor: Spacious one-bedroom apartments with private courtyards, perfect for relaxation and outdoor enjoyment.

Upper Levels: Modern two-bedroom apartments with private balconies, designed for single SDA participants who may wish to live with a non-SDA friend or family member or require overnight support.

Convenience and Accessibility: Each apartment features dedicated parking, and a lift ensures easy access to all levels.

Dedicated Onsite Overnight Accommodation (OOA): Provides peace of mind with round-the-clock support available if needed.

Location



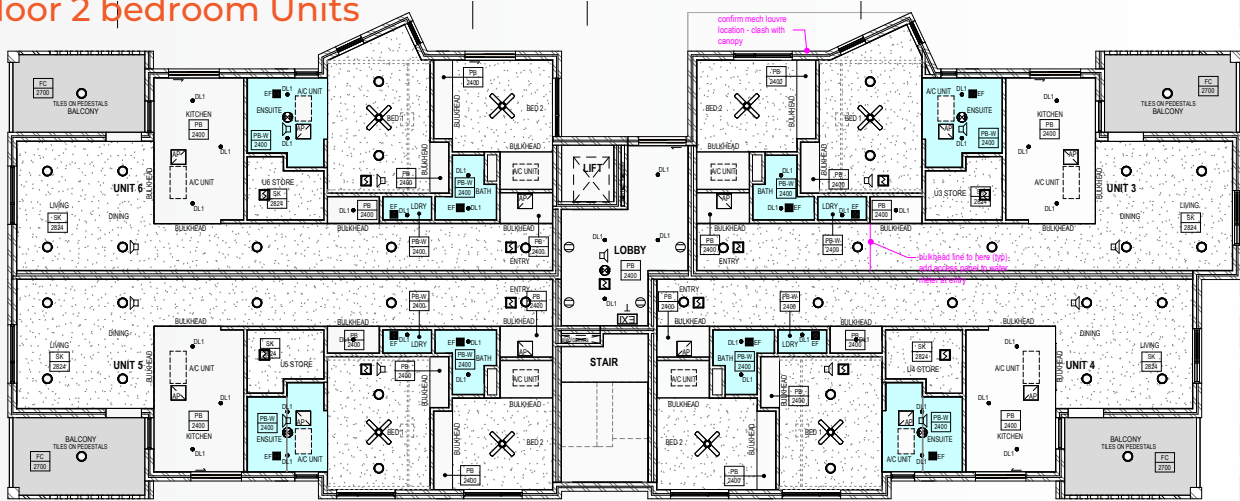
Westfield Booragoon - 5 minute drive



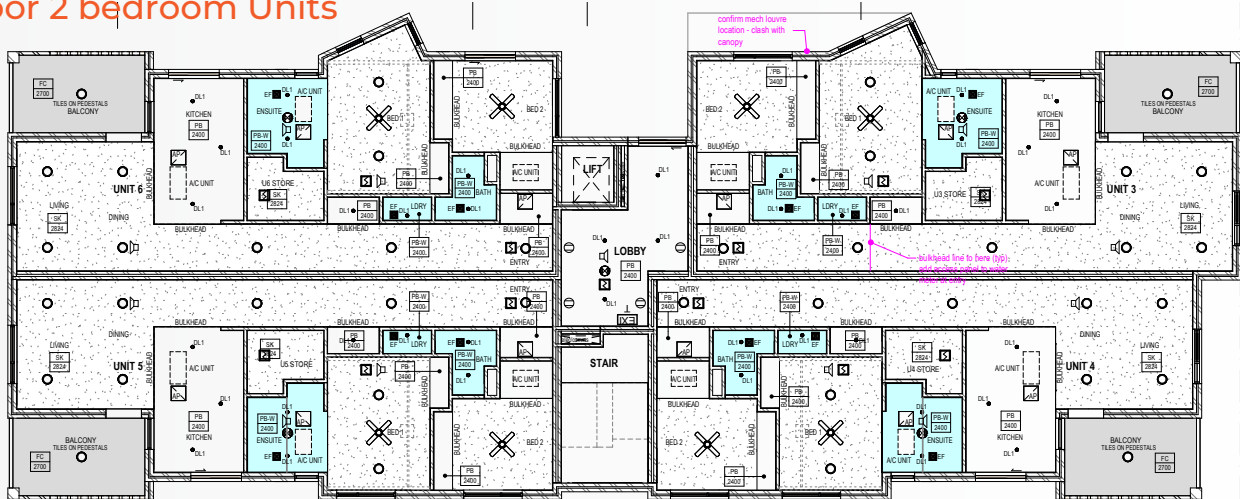
Public transport at your doorstep

Floor Plans

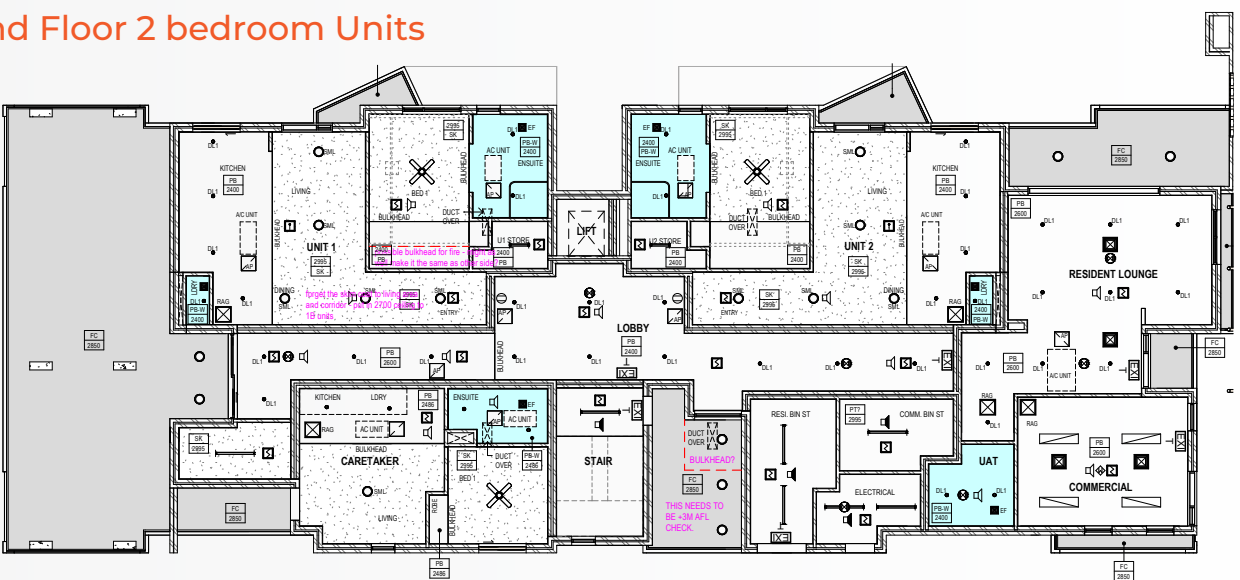
2nd Floor 2 bedroom Units



1st Floor 2 bedroom Units



Ground Floor 2 bedroom Units



Features



Our Apartments:

- 4 x one bedroom ground floor apartments
- 16 x two bedroom, two bath apartments
- 2 x dedicated OOA units
- Dedicated car parking
- Private Courtyards or Balconies
- Resident's Lounge Area

Additional Features and Benefits:

- High physical support design
- Exclusive use of shared vehicle
- Assistive Technology
- Broadband
- Energy efficient
- Concierge service
- Lift

Community Access Programs:

Bringing you to the community and bringing the community to you through:

- Programs that focus on your interests and abilities.
- Participation in training, education, or job readiness programs.
- Engagement in social, sport, health, and other recreational activities.
- Wildlife rescue and rehabilitation programs.
- Therapeutic animal training and riding centre.
- Onsite community lounges, coffee shops, and event spaces.
- Shared vehicles available for your exclusive use.



Ilios Villages



This development is another Ilios Village. Utano Care is the SDA provider and village manager for all Ilios Villages. SIL providers will be invited to participate in the village. Other services such as Allied Health, Community Participation services, Exercise, Animal Therapy will also be available at the village and through the concierge service provided by Utano Care.

Utano provides a concierge service to clients and coordinating between service providers

(including SIL and other services such as Allied Health, community events, exercise, skills training etc) operating within the village. The concierge service is designed to provide a one stop service allowing SIL providers, support coordinators and participants to access everything they need with minimal effort and delay.



Below are some of the organizations who will offer add on services within the villages:

BLACKBOOKSCO.

Event and skills training onsite
or within community



Custom exercise in home, onsite
or within community



SIL Provider

Contact us today

Melanie Grohovaz **m** 0421 661 296

Corinne Snowman **m** 0407 996 726



Utanocare.com.au